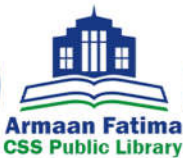




# CORPORATE PROFILE 2023-24



**For Franchise Details**

 **0300-1794466**  **042-35911609**

**Head Office**



**BUILDING NO 21, BABAR BLOCK, GARDEN TOWN  
BARKAT MARKET, NEAR KALMA CHOWK, LAHORE**



In the Name of Allah, the Most  
Beneficent, the Most Merciful



For Franchise Details

0300-1794466 042-35911609

Head Office



BUILDING NO 21, BABAR BLOCK, GARDEN TOWN  
BARKAT MARKET, NEAR KALMA CHOWK, LAHORE

# TABLE OF CONTENTS

1. About Us	1
2. Mission & Vision	2
3. Accreditations	3
4. Affiliations	4
5. Patron-in-Chief & Chairman's Message	5
6. Organizational Chart	6
7. CEO's Message	7
8. Messages of Team Members	8
9. Our Core Values	12
10. SWOT Analysis	13
11. Our Presence	14
12. College/School Glimpse	15
13. Our Support	20
14. How we Support	21
15. Feasibility Plan	22
16. Procedural Steps	28
17. Highlights of MOU Signing Ceremony	31
18. Application Form	33



## ABOUT US

**AL Bahria Group,** established in 2012, envisions offering top-notch education and unparalleled learning opportunities. This commitment led to the inception of various educational ventures across different tiers, including Al-Bahria Group of Colleges, Law College, Al-Bahria Schools, Al-Bahria CSS Institute and now going to launch a University very soon. Here, the emphasis lies in empowering students with confidence, knowledge and 21st-century skills necessary to meet the challenges of an increasingly competitive global community.

At Al-Bahria Group, our goal is to prepare students for success, not just by teaching them, but by giving them the abilities and self-assurance needed to excel in a competitive world. We have different Colleges, schools and partnerships that create a supportive atmosphere for students to grow and do well. Our aim is to help students thrive and make positive contributions to the ever-changing world.

Renowned for its excellence in higher education, Al-Bahria Group proudly affiliates with esteemed institutions such as the University of Gujrat, Government College University Faisalabad, and University of the Punjab. Within our campuses, our dignified faculty members, dedicated staff, and hardworking academic team provides an extensive range of learning choices. This commitment to academic diversity and excellence defines Al-Bahria Group, contributing to our status as the best developing educational network, spanning multiple branches of Colleges and schools across Pakistan.

**For Franchise Details**

 **0300-1794466**  **042-35911609**

**Head Office**



BUILDING NO 21, BABAR BLOCK, GARDEN TOWN  
BARKAT MARKET, NEAR KALMA CHOWK, LAHORE





## Our Mission

The mission of Al-Bahria Group of Colleges is to provide quality education and support to students, helping them excel in their academic and professional pursuits. We aim to nurture a learning environment that encourages critical thinking, innovation, and holistic development, preparing students to become capable and responsible individuals, ready to contribute to society positively. At our institute, our mission embraces inclusivity, encouraging a culture where every voice is heard and respected. Committed to excellence, we strive to instill values of integrity, collaboration, and social responsibility in our community. We're committed to sharing knowledge and helping people grow in all aspects of life. Our goal is to give individuals the skills and mindset they need to succeed in a constantly changing world.

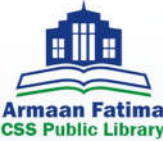
## Our Vision

At Al-Bahria Group of Colleges, our vision is to be a leading institution that fosters excellence in education and empowers students to achieve their aspirations. We want to create an environment where learning is exciting, and everyone feels supported. We aim to pioneer innovative pedagogies, embracing emerging technologies to create immersive learning experiences. We strive to create an environment where learning is inspiring and accessible to all, fostering innovation, excellence, and ethical leadership. Our goal is to produce graduates who are globally competitive and socially responsible. We aim to prepare future leaders who positively impact society through their knowledge, skills, and ethical values. Our vision is to help students become confident, creative, and ready to make a positive impact on the society.



## AL-BAHRIA INSTITUTE

### Our Accreditations



**For Franchise Details**

📞 0300-1794466 📞 042-35911609

**Head Office**



BUILDING NO 21, BABAR BLOCK, GARDEN TOWN  
BARKAT MARKET, NEAR KALMA CHOWK, LAHORE





## Our Affiliations



## Patron-in-Chief & Chairman's Message



**Ch. Muhammad Yaqoob**

Former Additional Registrar, Lahore High Court  
Former Controller of Examinations, University of the Punjab

**E**ducation is the most powerful tool to bring desirable changes in our personality and in the society. It is the only medium which enables us to move from darkness to light. A well-educated populace forms the backbone of a strong nation. Education is an investment in our collective future, and Al Bahria Group of Colleges & Schools System, with its outstanding faculty exemplifies this principle. Our colleges & schools are established with a mission to develop students into model executives of the future by the best balance of academic and character building in the light of the "Quran and Sunnah". Character building of the students is our core objective to shape their personalities

As the Patron-in-Chief & Chairman of Al Bahria Group of Colleges & Schools System, it is both an honor and a responsibility to lead an institution committed to fostering excellence in education. My role encompasses guiding the institution with a vision that prioritizes academic brilliance, innovation, and ethical values.

It brings me great pride to speak about the incredible team that forms the backbone of Al Bahria Group of Colleges & Schools System. Our organization's success is intricately woven into the fabric of a dedicated and proficient team, whose unwavering commitment to excellence is unmatched. From our accomplished faculty members to our efficient administrative staff, each individual contributes significantly to the success and growth of our institutions. Their passion for education and determination to provide the best learning experience to students make them the driving force behind Al-Bahria's success. As we look towards the future, we are confident that our remarkable team will continue to set new standards in the field of education. Dear investors, with your valuable support, we have the opportunity to fulfill the dream of establishing the finest and most expansive educational institute across Pakistan. Your partnership is instrumental in achieving this vision. May Allah Almighty help us to reach the height of glory and success. (Ameen)

For Franchise Details

0300-1794466 042-35911609

Head Office

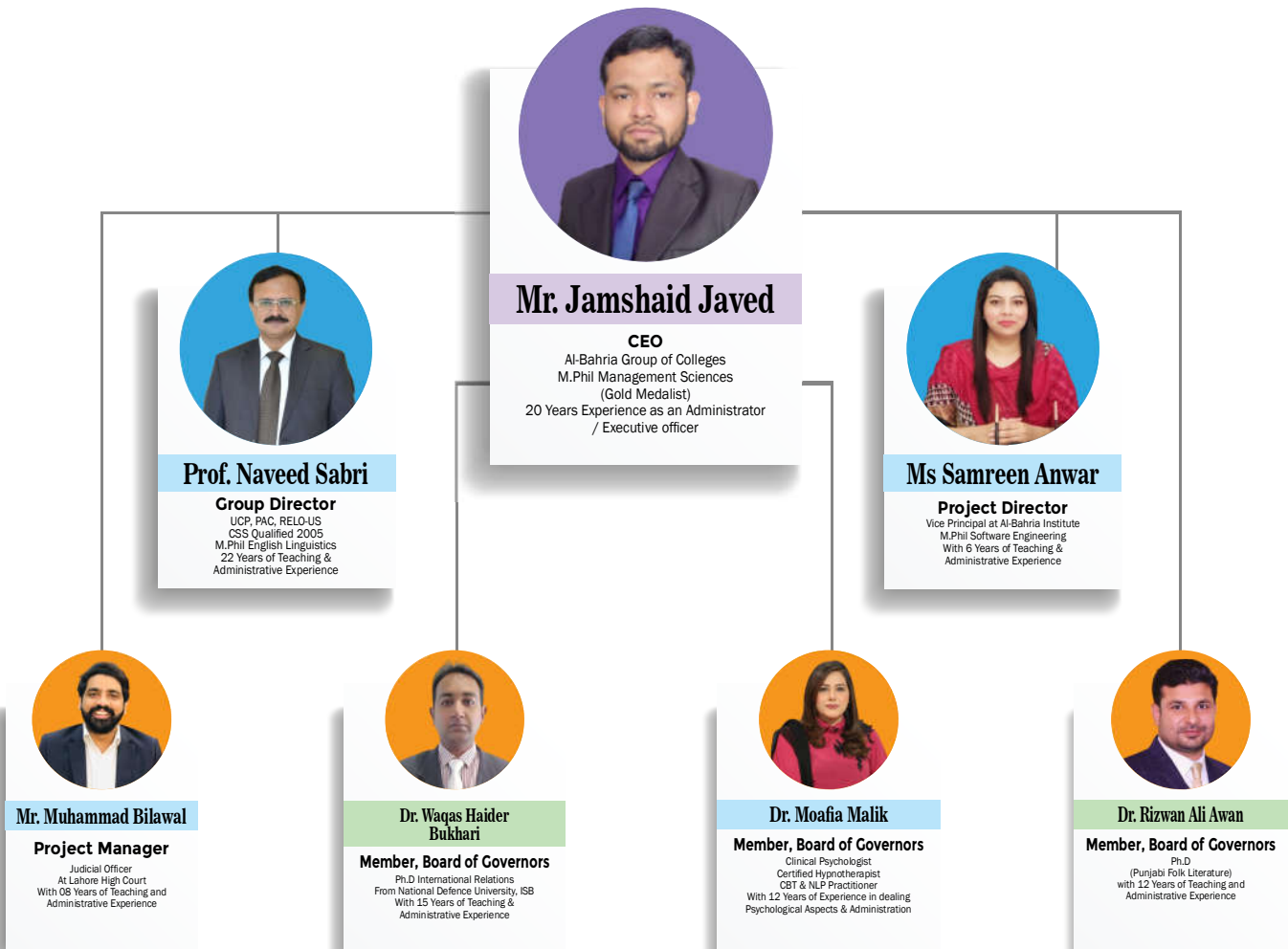


BUILDING NO 21, BABAR BLOCK, GARDEN TOWN  
BARKAT MARKET, NEAR KALMA CHOWK, LAHORE



## Organizational Chart

At Al-Bahria Group of Colleges, our strong team of experienced professionals is committed to guiding students to success. Each member of the Board of Governors brings expertise and passion to support your journey.



## CEO's Message



### Mr. Jamshaid Javaid

M.Phil Management Sciences (Gold Medalist)  
20 Years Experience as an Administrator/Executive Officer

## Dear Valuable Investors

I'm thrilled to introduce an investment opportunity within our franchise of Al-Bahria Group of Colleges & Schools System, uniting towards a shared mission of delivering outstanding educational quality. Quality defines our institute, guiding our every endeavor. We focus on excellence in curriculum, faculty, and infrastructure, ensuring our students get the very best. Your investment in our venture guarantees a secure financial path. Your one-time investment opens doors to various revenue streams, providing a reliable and fruitful investment for the future. We take pride in providing a secure investment opportunity that also unlocks multiple avenues for financial growth. Join us in this journey to secure your investment and explore numerous income opportunities. As we venture into this collaboration, let's together uphold our dedication to providing outstanding learning experiences, establishing new standards in education, and nurturing success for each of our students.

For Franchise Details

0300-1794466 042-35911609

Head Office



BUILDING NO 21, BABAR BLOCK, GARDEN TOWN  
BARKAT MARKET, NEAR KALMA CHOWK, LAHORE



## Ms Samreen Anwar

### Project Director

Vice Principal at Al-Bahria Institute

Having been a part of Al-Bahria Group of Colleges for a long period, I can confidently assure you that your investment in our franchise is secure. Our institution represents the pinnacle of educational excellence, supported by a proficient and committed faculty. Join us in shaping the future of education while ensuring the safety and prosperity of your investment.



## Prof. Naveed Sabri

### Group Director

M.Phil English Linguistics

With over 22 years of teaching experience across various institutions and organizations, I can confidently say that Al-Bahria Group of Colleges stands out as the best. Among all my endeavors, it's here that I've truly witnessed an unwavering commitment to excellence and quality education. I can vouch for the safety of your investment in our franchise. Our institute stands as a beacon of educational brilliance, boasting a competent faculty and a legacy of delivering the best. Rest assured, your investment is secure here, presenting not just an opportunity for a reliable income source but also a gateway to a brighter future.



## Dr. Rizwan Ali Awan

### Member, Board of Governors

Ph.D Punjabi Folk Literature

Being part of Al-Bahria Group of Colleges, I can guarantee the security of your investment in our franchise. Our institution stands as a prime example of educational excellence, backed by a dedicated and skilled faculty. Come join us in shaping the future of education, where your investment not only thrives but also contributes to the growth and success of our educational community.



## Dr. Waqas Haider Bukhari

### Member, Board of Governors

Ph.D International Relations  
from National Defence University, ISB

Having dedicated a significant tenure to Al-Bahria Group of Colleges, I can say confidently that the institute stands as a beacon of top-tier education. If you're seeking a secure and rewarding investment opportunity, look no further. Investing in Al-Bahria Group of Colleges is a safe financial venture which shall lead to guaranteed success. Let's join hands to open more branches of this educational group to achieve academic excellence. We can help provide quality education and keep our investments safe and successful, all by working together.





## Dr. Moafia Malik

### Member, Board of Governors

Clinical Psychologist, Certified Hypnotherapist

As a psychologist and a proud member of Al-Bahria Group of Colleges, I want to assure you that your investment in contributing to educational growth will be a secure and meaningful endeavor. Join us in opening more branches of Al-Bahria Group of Colleges; and together, we can make a lasting impact on education. Your support will play a crucial role in expanding our reach and providing quality education.



## Mr. Muhammad Bilawal

### Project Manager

Judicial Officer at Lahore High Court

As a Government employee, I've had the opportunity to work with various private organizations, and among them, Al-Bahria Group of Colleges stands out as the best. Throughout my extensive tenure here, I've observed a consistent dedication to excellence which shall safeguard your capital. Investing in Al-Bahria Group of Colleges franchise not only guarantees a safe investment but also opens doors to rewarding financial opportunities and a bright future for everyone involved.



## Mr. Abbas Raza

### Tax & Corporate Law Consultant

Education is the cornerstone of societal progress and individual empowerment. It not only equips individuals with essential skills but also plays a pivotal role in shaping a brighter future for communities and society as a whole. I am pleased to acknowledge that Al-Bahria Group of Colleges and Schools stands out as a provider of quality education, earning its reputation as the best institute in the field. I can confidently assert that investing in an Al-Bahria Group of Colleges and Schools franchise guarantees both a secure investment and a steadfast commitment to nurturing exceptional educational standards.



## Mr. Kalb-e-Abbas

### Legal Advisor

Education is the foundation of progress and empowerment. As a legal advisor, I stress its paramount importance in shaping our future. Al-Bahria Group of Colleges and Schools epitomizes quality education. Investing in an Al-Bahria franchise guarantees not only a secure investment but also an unwavering commitment to exceptional education. Their dedication to excellence shines through every educational aspect, offering students top-tier learning experiences for a successful future. Additionally, partnering with Aslam Malik & Company ensures the meticulous handling of audit matters, further reinforcing the reliability and credibility of the educational institution.

## Our Core Values



### **LEADERSHIP:**

Develop leadership skills by ensuring that leaders at all levels act as positive role models and lead by example.



### **ETHICS:**

Behaving ethically in all interactions at all levels.



### **ACADEMIC SUCCESS:**

Having quality education designed to meet the career and transfer needs of our community.



### **EQUALITY:**

Promote equal opportunity in all aspects of student life.



### **PURSUIT OF EXCELLENCE:**

Challenge and support students with a holistic approach to learning, so that they achieve more than they can ever believe they could.



### **INSPIRATION:**

Inspire to enjoy and succeed in all aspects of learning.



### **INTEGRITY:**

We are committed to upholding academic integrity through ethical standards in all aspects of academic work.



### **EMPATHY:**

We prioritize empathy for open communication, ensuring mutual understanding and support among students.



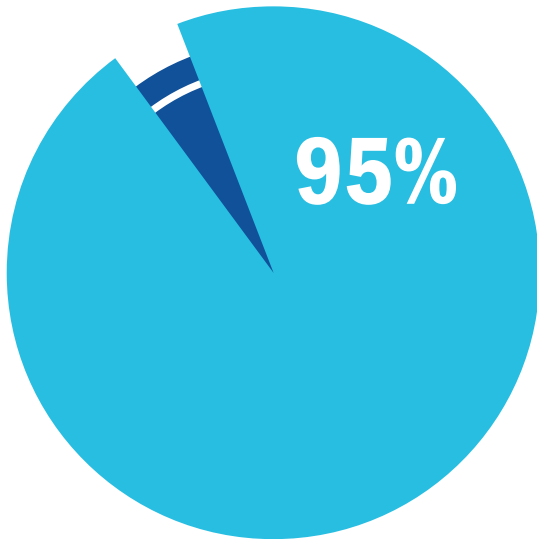
### **CREATIVITY:**

Al-Bahria Group of Colleges fosters innovation, empowering students in analytical thinking for effective decision-making.



### **24/7 CONSISTENCY:**

Al-Bahria Group of Colleges maintains 24/7 consistency for an unwavering educational environment.



## BEST IN EDUCATION



### 95% SUCCESS RATE NATIONWIDE

**We Believe in Best Education for All**



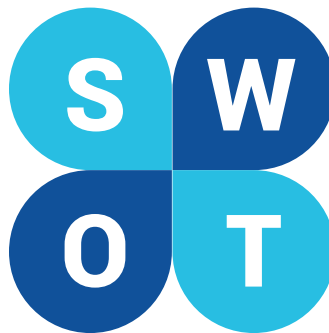
## SWOT ANALYSIS

### Strengths

As a private institute, our main strength is our dedicated team. We have highly qualified and experienced individuals in the education sector. The strength of the institute is attributed to the capabilities of its staff.

### Opportunities

Private education industry offers enormous opportunities, given the number of parents always wish their children to secure admission in the best institution according to their affordability and to excel in life.



### Weaknesses

As a developing private institute in Pakistan, expanding to multiple locations across the country will take time due to the intense competition in the education sector. That's our primary challenge at the moment.

### Threats

Every business encounters challenges at different stages of its life. These challenges can come from inside the business or from the external factors. This highlights why having a business plan is important.

**For Franchise Details**

 0300-1794466  042-35911609

**Head Office**



BUILDING NO 21, BABAR BLOCK, GARDEN TOWN  
BARKAT MARKET, NEAR KALMA CHOWK, LAHORE

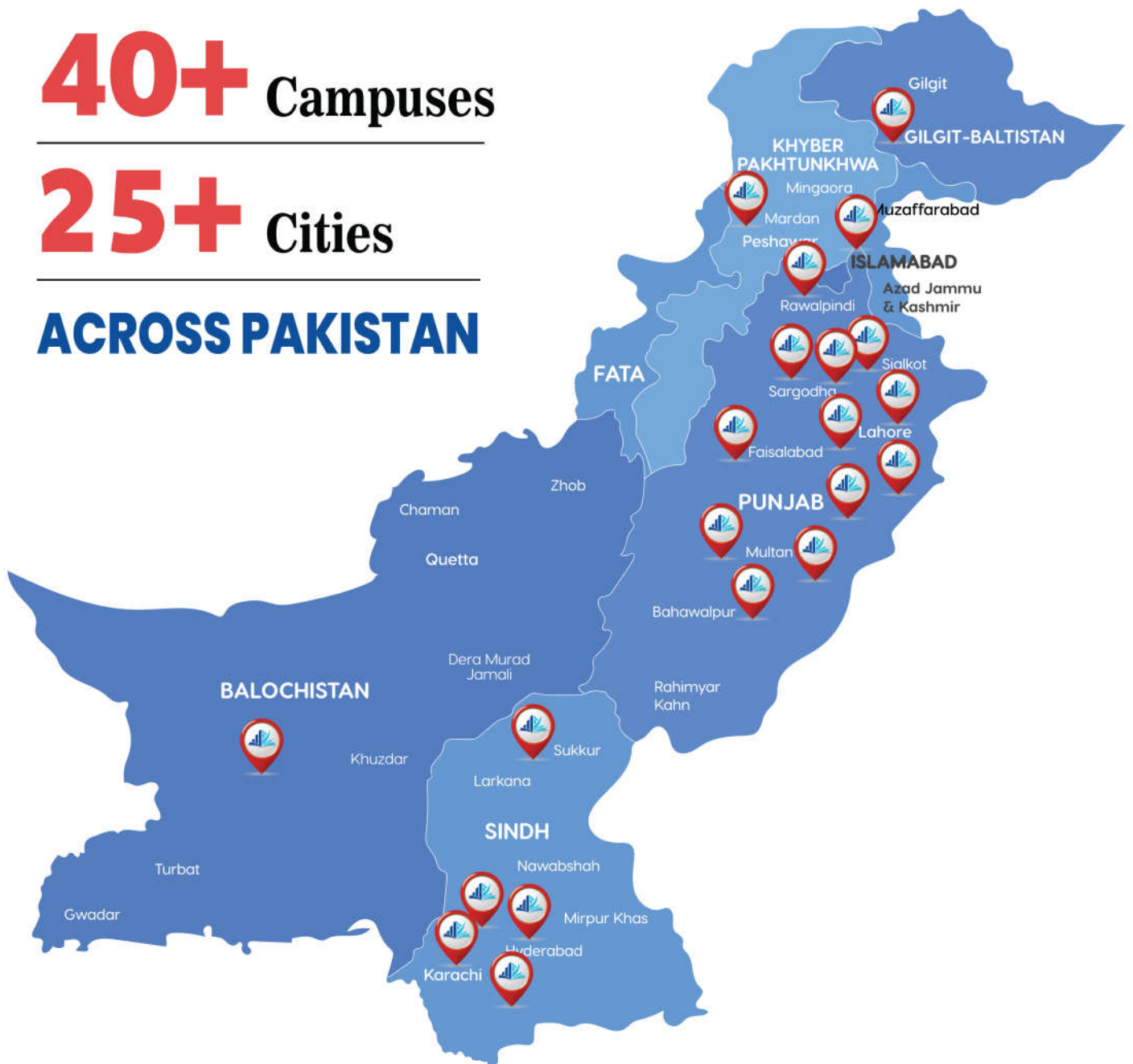


## Our Presence

**40+** Campuses

**25+** Cities

**ACROSS PAKISTAN**



# Al-Bahrians

## Shining Stars of Al-Bahria Group of Colleges



For Franchise Details

0300-1794466 042-35911609

Head Office



BUILDING NO 21, BABAR BLOCK, GARDEN TOWN  
BARKAT MARKET, NEAR KALMA CHOWK, LAHORE

# 15



## Al-Bahrians

Shining Stars of Al-Bahria Group of Colleges







Al-Bahria Forces  
School System

# Al-Bahrians

Shining Stars of Al-Bahria Forces School System



For Franchise Details

Head Office

0300-1794466 042-35911609



BUILDING NO 21, BABAR BLOCK, GARDEN TOWN  
BARKAT MARKET, NEAR KALMA CHOWK, LAHORE





## Al-Bahrians

Shining Stars of Al-Bahria Grammar School







AL-BAHRIA  
GRAMMAR SCHOOL

## Al-Bahrians

Shining Stars of Al-Bahria Grammar School



For Franchise Details

Head Office

0300-1794466 042-35911609



BUILDING NO 21, BABAR BLOCK, GARDEN TOWN  
BARKAT MARKET, NEAR KALMA CHOWK, LAHORE

# OUR SUPPORT

BE A PART OF THE BRAND



## SUPPORT AND BENEFITS MATRIX FOR **FRANCHISE** HOW WE SUPPORT YOU?



**For Franchise Details**

📞 0300-1794466 📞 042-35911609

**Head Office**



BUILDING NO 21, BABAR BLOCK, GARDEN TOWN  
BARKAT MARKET, NEAR KALMA CHOWK, LAHORE



## INTERMEDIATE COLLEGE

(FSc, ICS, I.Com, F.A, D.Com and etc)

### BUILDING / AREA REQUIREMENTS

Building / Plot Area (Boys)	2-Kanal (Minimum)	Total 4-Kanal (Minimum)
Building / Plot Area (Girls)	2-Kanal (Minimum)	
Classes Level	(FSc, ICS, I.Com, F.A, D.Com and etc)	
Construction Required	8000-10000 Square Feet (Each Premises)	
Number of Rooms	In Each Premises 12-15 Approx. Including Class Rooms, Offices, Library, Cafeteria and Labs: (Physics, Biology / Chemistry, Computer)	
Building Front	Up to 100 feet of both premises	
Duration	10 Years Extendable	

### FRANCHISE FEE DETAILS

Application Fee (Non-Refundable)	Rs. 5,000/- each category
License Fee for New College Boys / Girls (Non-Refundable)	Rs. 15,00,000/- each category
License Fee for Conversion of College Boys / Girls (Non-Refundable)	50% OFF (Rs. 7,50,000) each category
Royalty Percentage	10% On Gross Collection / Income

### Note:

The Name/ Title of College / Institute for the new registration proceeds / directed in the MOU.

## ASSOCIATE DEGREE COLLEGE

(ADP in Sciences, Computer Science, Arts, Commerce and etc)

### BUILDING / AREA REQUIREMENTS

Building / Plot Area (Boys)	2-Kanal (Minimum)	Total 4-Kanal (Minimum)
Building / Plot Area (Girls)	2-Kanal (Minimum)	
Classes Level	(ADP in Sciences, Computer Science, Arts, Commerce and etc)	
Construction Required	8000-10000 Square Feet (Each Premises)	
Number of Rooms	In Each Premises 12-15 Approx. Including Class Rooms, Offices, Library, Cafeteria and Labs: (Physics, Biology / Chemistry, Computer)	
Building Front	Up to 100 feet of both premises	
Duration	10 Years Extendable	

### FRANCHISE FEE DETAILS

Application Fee (Non-Refundable)	Rs. 5,000/- each category
License Fee for New College Boys / Girls (Non-Refundable)	Rs. 15,00,000/- each category
License Fee for Conversion of College Boys / Girls (Non-Refundable)	50% OFF (Rs. 7,50,000) each category
Royalty Percentage	10% On Gross Collection / Income

### Note:

The Name/ Title of College / Institute for the new registration proceeds / directed in the MOU.

**For Franchise Details**

**Head Office**

0300-1794466 042-35911609



BUILDING NO 21, BABAR BLOCK, GARDEN TOWN  
BARKAT MARKET, NEAR KALMA CHOWK, LAHORE

## AL-BAHRIA DEGREE COLLEGE

(BS - 4 / 5 Years Degree Program in any subject)

### BUILDING / AREA REQUIREMENTS

Building / Plot Area	4-Kanal (Minimum)
Classes Level	BS-4 OR 5 Years Degree
Construction Required	16000-18000 Square Feet
Number of Rooms	25 Approx. Including Class Rooms, Offices, Library, cafeteria and Labs: (Physics, Biology / Chemistry, Computer)
Building Front	Up to 100 feet
Duration	10 Years Extendable

### FRANCHISE FEE DETAILS

Application Fee (Non-Refundable)	Rs. 10,000/-
License Fee for New Degree College (Non-Refundable)	Rs. 20,00,000/-
License Fee for Conversion Degree College (Non-Refundable)	50% OFF (Rs. 10,00,000)
Royalty Percentage	10% On Gross Collection / Income

### Note:

The Name/ Title of College / Institute for the new registration proceeds / directed in the MOU.





## AL-BAHRIA LAW COLLEGE

(LLB, LL.M and Barrister-ship accreditation classes  
from any Foreign University)

### BUILDING / AREA REQUIREMENTS

Building / Plot Area	4-Kanal (Minimum)
Classes Level	LL.B 5 Years Degree
Construction Required	16000-18000 Square Feet
Number of Rooms	25 Approx. (Including Class Rooms, Offices, Library, Computer Lab, Law Moots and cafeteria)
Building Front	Up to 100 feet
Duration	10 Years Extendable

### FRANCHISE FEE DETAILS

Application Fee (Non-Refundable)	Rs. 10,000/-
License Fee for New Degree College (Non-Refundable)	Rs. 3,000,000/-
License Fee for Conversion Degree College (Non-Refundable)	50% OFF (Rs. 15,00,000)
Royalty Percentage	15% On Gross Collection / Income

### Note:

The Name/ Title of College / Institute for the new registration proceeds / directed in the MOU.



**For Franchise Details**

0300-1794466 042-35911609

**Head Office**



BUILDING NO 21, BABAR BLOCK, GARDEN TOWN  
BARKAT MARKET, NEAR KALMA CHOWK, LAHORE

25



## PRO-PACKAGE FOR FRANCHISE



### AL-BAHRIA CSS INSTITUTE

(CSS, PMS and One Paper Competitive Exams)



### AL BAHRIA SCHOOL OF ENGLISH

(Competitive English Classes)



### PUNJAB JUDICIAL OFFICERS ACADEMY

(Judiciary Exams: Civil Judge, ASJ, ADPP & DDPP Classes)



### THE LAHORE SHORTHAND ACADEMY

(Stenographer Govt. Exams Preparation)



### THE ADVANCED INSTITUTE OF SKILLS DEVELOPMENT

(Computer & IT Short Courses)



### AL-BAHRIA INSTITUTE OF COMPETITIVE LANGUAGE

(IELTS and Spoken English Courses)



### AL-BAHRIA INSTITUTE OF COMPETITIVE EXCELLENCE

(E.CAT and M.CAT Testing Services)

#### BUILDING FEASIBILITY

Building / Plot Area	2-4-Kanal (Minimum)
Classes Level	Pro-Package For Franchise Classes
Construction Required	10000-15000 Square Feet
Number of Rooms	12-15 Approx. Including Class Rooms, Offices, Library and Two Computer Labs
Building Front	Up to 100 feet
Pakistan Cities includes:	Islamabad, Peshawar, Karachi, Quetta and Hyderabad (Sindh)
Mode of Classes	Physical and Online
Duration	10 Years Extendable

## FRANCHISE FEE DETAILS

Application Fee (Non-Refundable)	Rs. 50,000/- Others For Karachi & Hyderabad Rs. 100,000/-
License Fee for Pro-Package Franchise Classes (Non-Refundable)	Rs. 50,00,000/-
Royalty Percentage	12% On Gross Collection / Income

### Note:

The Name/ Title of College / Institute for the new registration proceeds / directed in the MOU.



**For Franchise Details**

 **0300-1794466**  **042-35911609**

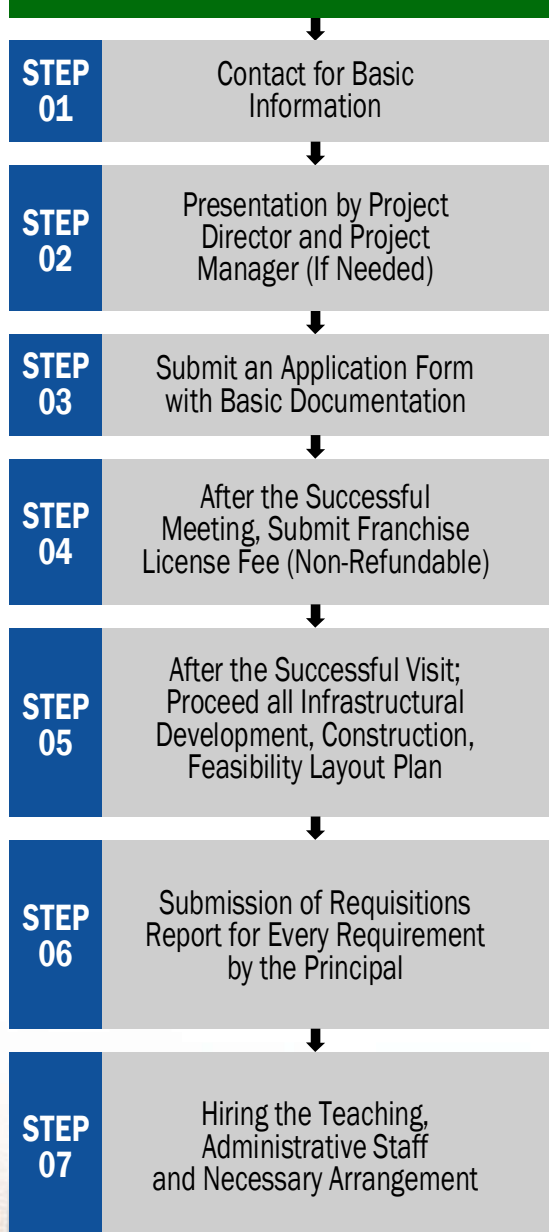
**Head Office**



BUILDING NO 21, BABAR BLOCK, GARDEN TOWN  
BARKAT MARKET, NEAR KALMA CHOWK, LAHORE

## PROCEDURAL STEPS TO BE A FRANCHISEE

### STEPS BY APPLICANT

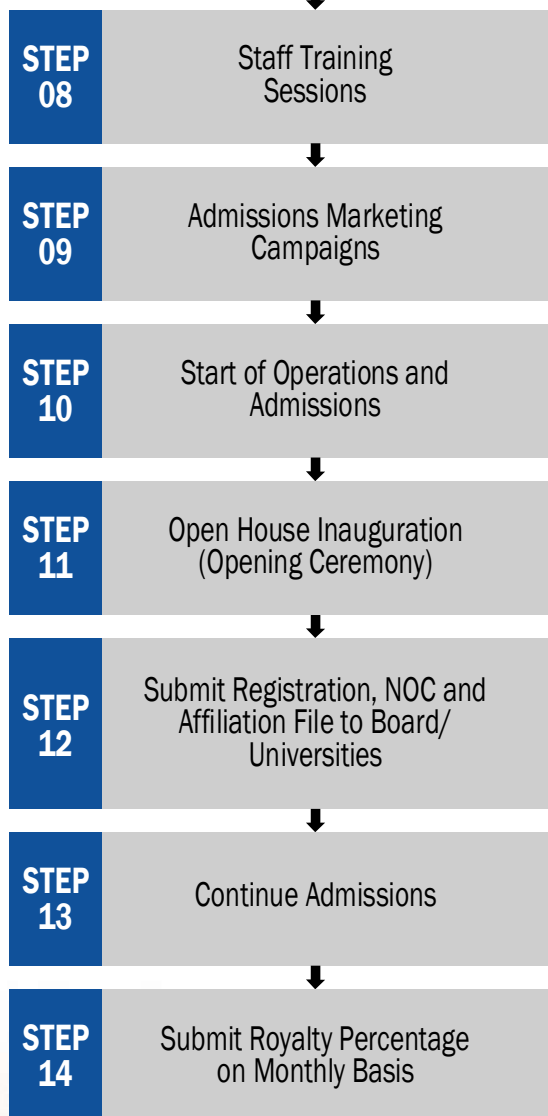


### STEPS BY HEAD OFFICE

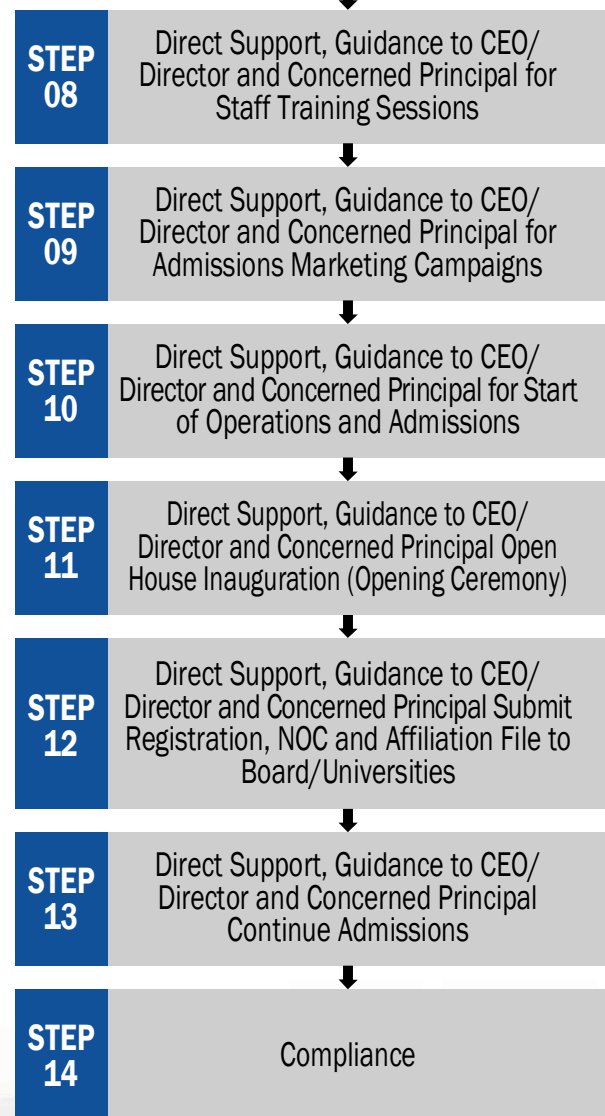


## PROCEDURAL STEPS TO BE A FRANCHISEE

### STEPS BY APPLICANT



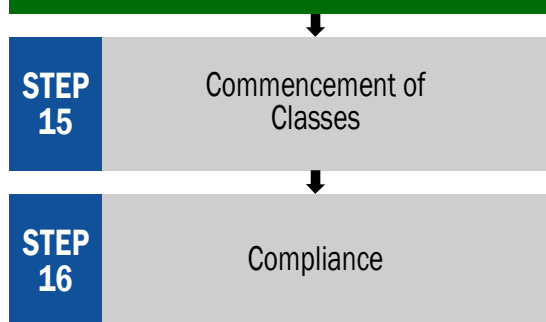
### STEPS BY HEAD OFFICE



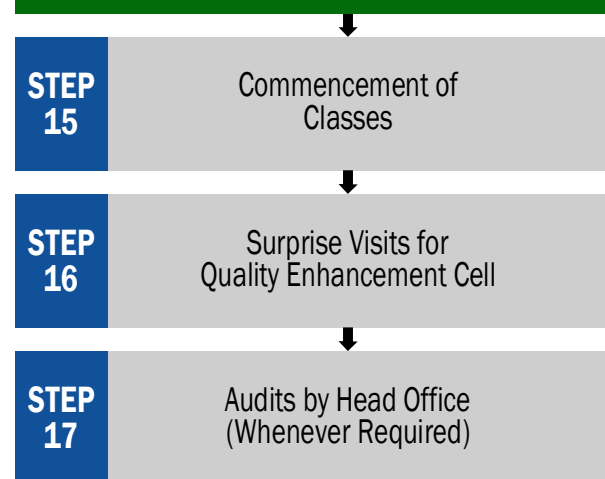


## PROCEDURAL STEPS TO BE A FRANCHISEE

### STEPS BY APPLICANT



### STEPS BY HEAD OFFICE



## Highlights of MOU Signing Ceremony



For Franchise Details

0300-1794466 042-35911609

Head Office



BUILDING NO 21, BABAR BLOCK, GARDEN TOWN  
BARKAT MARKET, NEAR KALMA CHOWK, LAHORE



## Highlights of MOU Signing Ceremony





## Investor Assessment Form

### Part A Personal Information

Applicant Name: \_\_\_\_\_

CNIC No: \_\_\_\_\_

Postal Address: \_\_\_\_\_

Email: \_\_\_\_\_

Mobile No: \_\_\_\_\_ Phone No: \_\_\_\_\_

Paste  
Passport Size  
Photograph

### Part A-1 Educational Background

Qualification	Institution	Passing Year
Bachelors		
Masters		
Doctorate		
Others		

### Part A-2 Professional Experience

If Employed, Job Experience	<input type="checkbox"/> Less than 3 Years	<input type="checkbox"/> Less than 7 Years	<input type="checkbox"/> More than 10 Years
If Served in Educational Dept	<input type="checkbox"/> Less than 3 Years	<input type="checkbox"/> Less than 7 Years	<input type="checkbox"/> More than 10 Years
If Already in Business	<input type="checkbox"/> Sole-Proprietor	<input type="checkbox"/> Franchise/Dealership	<input type="checkbox"/> Public/Pvt.LTD
Nature of Business	<input type="checkbox"/> Retail	<input type="checkbox"/> Whole Seller	<input type="checkbox"/> Service Industry <input type="checkbox"/> Consultancy

### Part A-3 Next of Kin Details

Name: \_\_\_\_\_ Relation: \_\_\_\_\_

CNIC No: \_\_\_\_\_ Mobile No: \_\_\_\_\_

Professional Status: ☐ Govt Servant ☐ Retired ☐ Self Business ☐ Private Job

Address: \_\_\_\_\_

**For Franchise Details**

0300-1794466 042-35911609

**Head Office**



BUILDING NO 21, BABAR BLOCK, GARDEN TOWN  
BARKAT MARKET, NEAR KALMA CHOWK, LAHORE

33

## Part B Proposed Franchise Locations

City		Local Areas/Locations Within the City	
City # 1		Location # 1	
City # 2		Location # 2	
City # 3		Location # 3	

## Part B-1 College / School in the same vicinity (Optional Info)

Name of School	Students#	Fee Structure

## Part C Property Status

School Building:	Owned <input type="checkbox"/>	Rented <input type="checkbox"/>	To Be Arranged <input type="checkbox"/>
Type of Building:	Residential <input type="checkbox"/>	Commercial <input type="checkbox"/>	
Total Plot Area (Sq.ft)	Constructed		Non-Constructed

## Part D Your Financial Commitment

Planned Investment	Rs.		
Financing	Personal <input type="checkbox"/>	Partnership <input type="checkbox"/>	Bank Loan <input type="checkbox"/>

## Part E Additional Comments

---



---



---



---

## Part F

## Click On Your Interest

### Al-Bahria Group of Colleges:

- Intermediate College ☐
- Girls ☐ Boys ☐
- Al-Bahria Degree College ☐
- Al-Bahria Law College ☐
- Al-Bahria Grammar School ☐
- Al-Bahria Forces School System ☐

### Business Pro Package:

- Al-Bahria CSS Institute ☐
- Al-Bahria School of English ☐
- Punjab Judicial Officers Academy ☐
- The Lahore Shorthand Academy ☐
- Al-Bahria Institute of Competitive Language ☐
- Al-Bahria Institute of Competitive Excellence ☐
- The Advanced Institute of Skills Development ☐

## Part G

## Preference of School Type (only for school)

<b>Type of School</b>	Pre-School (3 Classes)	<input type="checkbox"/>	Pre-School to Class V (8 Classes)	<input type="checkbox"/>
	Pre-School to Class X (13 Classes)	<input type="checkbox"/>	Secondary VI to X (5 Classes)	<input type="checkbox"/>
Total Area:	Covered Area	<input type="checkbox"/>	Purpose Built	<input type="checkbox"/>
Your Intend to Open:	Single Branch	<input type="checkbox"/>	Multiple Branches	<input type="checkbox"/>

**For Franchise Details**

0300-1794466 042-35911609

**Head Office**



BUILDING NO 21, BABAR BLOCK, GARDEN TOWN  
BARKAT MARKET, NEAR KALMA CHOWK, LAHORE



## Part H Conversion of Existing College / School (if applicable)

Name of Existing School				
Address				
Level	Pre-School <input type="checkbox"/>	Primary <input type="checkbox"/>	Middle <input type="checkbox"/>	High <input type="checkbox"/>
Medium of Instructions	English <input type="checkbox"/>	Urdu <input type="checkbox"/>		
Total Students	Female		Male	
Total Teachers	Female		Male	
Fee Structure				

## Part I Required Documents

- Copy of CNIC ☐
- Passport Size Photograph ☐
- CNIC Copy of Kin ☐
- Copy of Deposited Fee Challan/Cheque/Pay Order ☐

## Part J Mode of Payments

- ✓ Cheque ☐
- ✓ Pay Order ☐
- ✓ Deposit in Account ☐
- ✓ Online Bank Transfer ☐



**BANK AL HABIB PVT LTD**

**Account Title:** Al-Bahria College, Lahore

**Account No:** 0338 0981 0002 2501

**IBAN No:** PK46 BAML 0338 0981 0002 2501

### CORPORATE OFFICE

Building No 21, Babar Block, Barkat Market, Kalma Chowk, Lahore  
042-35911609 :: 0300-1794466

**Signature of Applicant**

**Date:** \_\_\_\_\_



## For Office Use Only

• Acceptance of the Profile	Accepted <input type="checkbox"/>	Rejected <input type="checkbox"/>	Under-Consideration <input type="checkbox"/>
• Suitability of Suit	Accepted <input type="checkbox"/>	Rejected <input type="checkbox"/>	Under-Consideration <input type="checkbox"/>
• Financial Strength	Accepted <input type="checkbox"/>	Rejected <input type="checkbox"/>	Under-Consideration <input type="checkbox"/>
• Business Strength	Accepted <input type="checkbox"/>	Rejected <input type="checkbox"/>	Under-Consideration <input type="checkbox"/>

### Evaluator - 1

Name: \_\_\_\_\_

Signature: \_\_\_\_\_

Date: \_\_\_\_\_

### Evaluator - 2

Name: \_\_\_\_\_

Signature: \_\_\_\_\_

Date: \_\_\_\_\_

### Evaluator - 3

Name: \_\_\_\_\_

Signature: \_\_\_\_\_

Date: \_\_\_\_\_

**Approved by Project Director** Accepted ☐ Rejected ☐ Under-Consideration ☐

### Remarks (if any):

---



---

Name: \_\_\_\_\_ Signature: \_\_\_\_\_ Date: \_\_\_\_\_

# AL-BAHRIA GROUP OF COLLEGES

(A Project of Al-Bahria Group)



**For Franchise Details**

 **0300-1794466**  **042-35911609**

**Head Office**



**BUILDING NO 21, BABAR BLOCK, GARDEN TOWN  
BARKAT MARKET, NEAR KALMA CHOWK, LAHORE**